

124.18'

N88°56'21"E

122.18'

798.02'

142.13'

120.78'

17.21'

N89°07'01"E

126.25'

791.89'

N 65°45'27.8881"E
370332.2904

100.08'

100.00'

N88°56'21"E

100.07'

391.42'

392.90'

100.07'

N89°04'50"E

100.09'

100.09'

N89°07'01"E

405.10'

401.62'

100.08'

BLOCK

8.21

S88°56'21"W

N88°56'56"E

S88°56'56"W

S88°56'56"W

N89°04'50"E

S89°04'50"W

S89°07'01"W

S89°07'01"W

BLOCK 11

8.16

30,882 S.F.
0.70 ACRES

8.17

30,322 S.F.
0.70 ACRES

8.18

33,307 S.F.
0.76 ACRES

8.19

31,593 S.F.
0.73 ACRES

8.20

28,233 S.F.
0.65 ACRES

12.50'
SETBACK (TTR.)

15.00'
SETBACK (TTR.)

12.50'
SETBACK (TTR.)

ALBERT DRIVE (50' ROW.)

N86°44'31"E (297.469 S.F. OR 6.83 ACRES)

MATCHLINE - SEE SHEET RP50.02

MATCHLINE - SEE SHEET RP50.02

44.52'

C56

C15

657

115.00'

115.00'

861.40'

115.00'

115.00'

BL

48.27'

C37

C8

C38

35.22'

142.03'

N86°44'31"E

137.88'

861.40'

25.00'
SETBACK (TTR.)

126.14'

221.20'

10

32,184 S.F.
0.74 ACRES

11

32,500 S.F.
0.75 ACRES

12

31,566 S.F.
0.72 ACRES

13

32,069 S.F.
0.74 ACRES

14

32,571 S.F.
0.75 ACRES

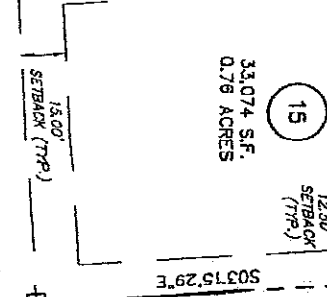
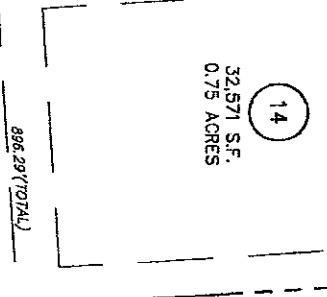
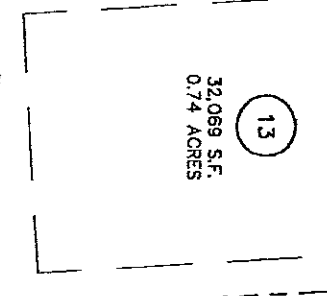
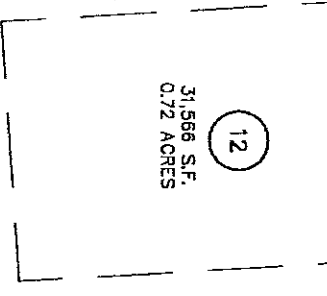
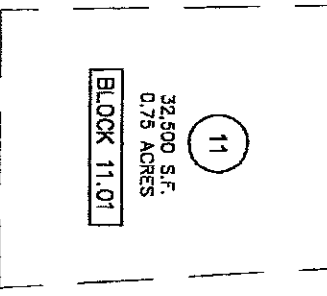
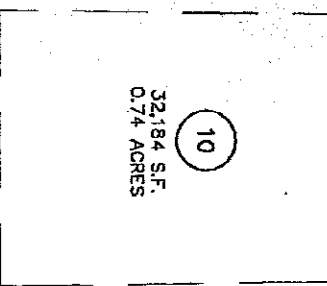
15

33,074 S.F.
0.76 ACRES

12.50'
SETBACK (TTR.)

15.00'
SETBACK (TTR.)

433.77(TOTAL)



S00°40'26"E

S03°15'29"E

S03°15'29"E

S03°15'29"E

S03°15'29"E

S03°15'29"E

90701