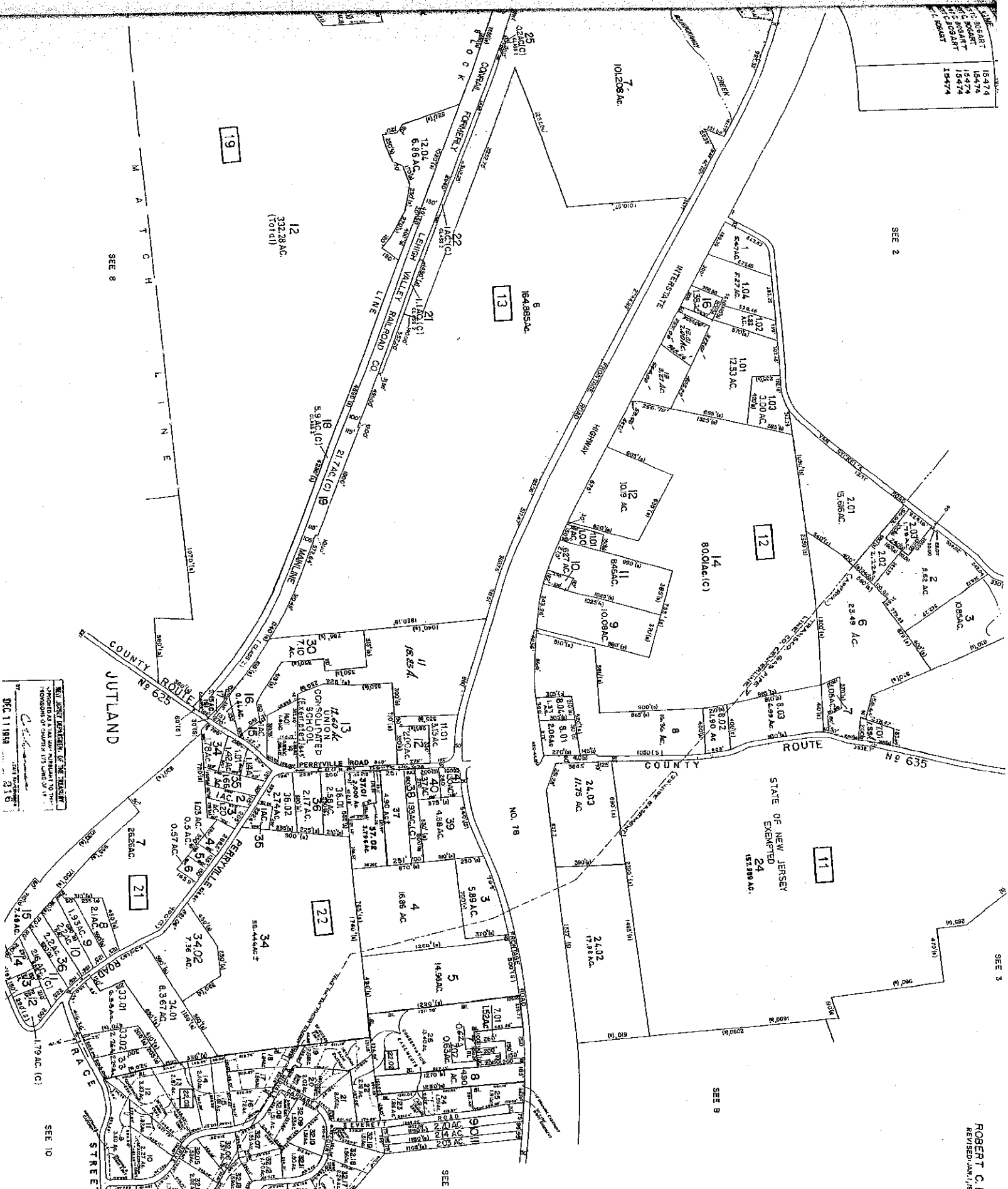


15474
 15474
 15474
 15474
 15474

SEE 2

SEE 3

ROBERT C. BOGART & ASSOCIATES
 REVISED JAN. 1, 1987, JAN. 1, 1988, 8/1/98, 4/1/99, 5/1/99, 8/2/99



WILLIAMS DEPARTMENT OF THE TREASURY
 STATE OF NEW JERSEY
 DEPARTMENT OF TREASURY
 DEPARTMENT OF REVENUE
 DEPARTMENT OF TAXATION
 DEPARTMENT OF BANKING AND INSURANCE
 DEPARTMENT OF COMMUNITY AFFAIRS
 DEPARTMENT OF ENVIRONMENTAL AFFAIRS
 DEPARTMENT OF HEALTH AND HUMAN SERVICES
 DEPARTMENT OF LABOR AND INDUSTRY
 DEPARTMENT OF POLICE AND FIRE
 DEPARTMENT OF PUBLIC SAFETY
 DEPARTMENT OF SOCIAL SERVICES
 DEPARTMENT OF TRANSPORTATION
 DEPARTMENT OF WATER AND LAND USE
 DEPARTMENT OF WILDLIFE AND FORESTRY
 DEPARTMENT OF EDUCATION
 DEPARTMENT OF HEALTH CARE SERVICES
 DEPARTMENT OF HUMAN SERVICES
 DEPARTMENT OF LABOR AND INDUSTRY
 DEPARTMENT OF POLICE AND FIRE
 DEPARTMENT OF PUBLIC SAFETY
 DEPARTMENT OF SOCIAL SERVICES
 DEPARTMENT OF TRANSPORTATION
 DEPARTMENT OF WATER AND LAND USE
 DEPARTMENT OF WILDLIFE AND FORESTRY

TAX MAP
 UNION TOWNSHIP
 HUNTERDON COUNTY, NEW JERSEY
 SCALE = 1" = 400' NOVEMBER 1988
 KERSTONE MAPPING CO. INC.
 1454 MT. ROSE AVE.
 YORK, PENNSYLVANIA

DEC 11 1988 216