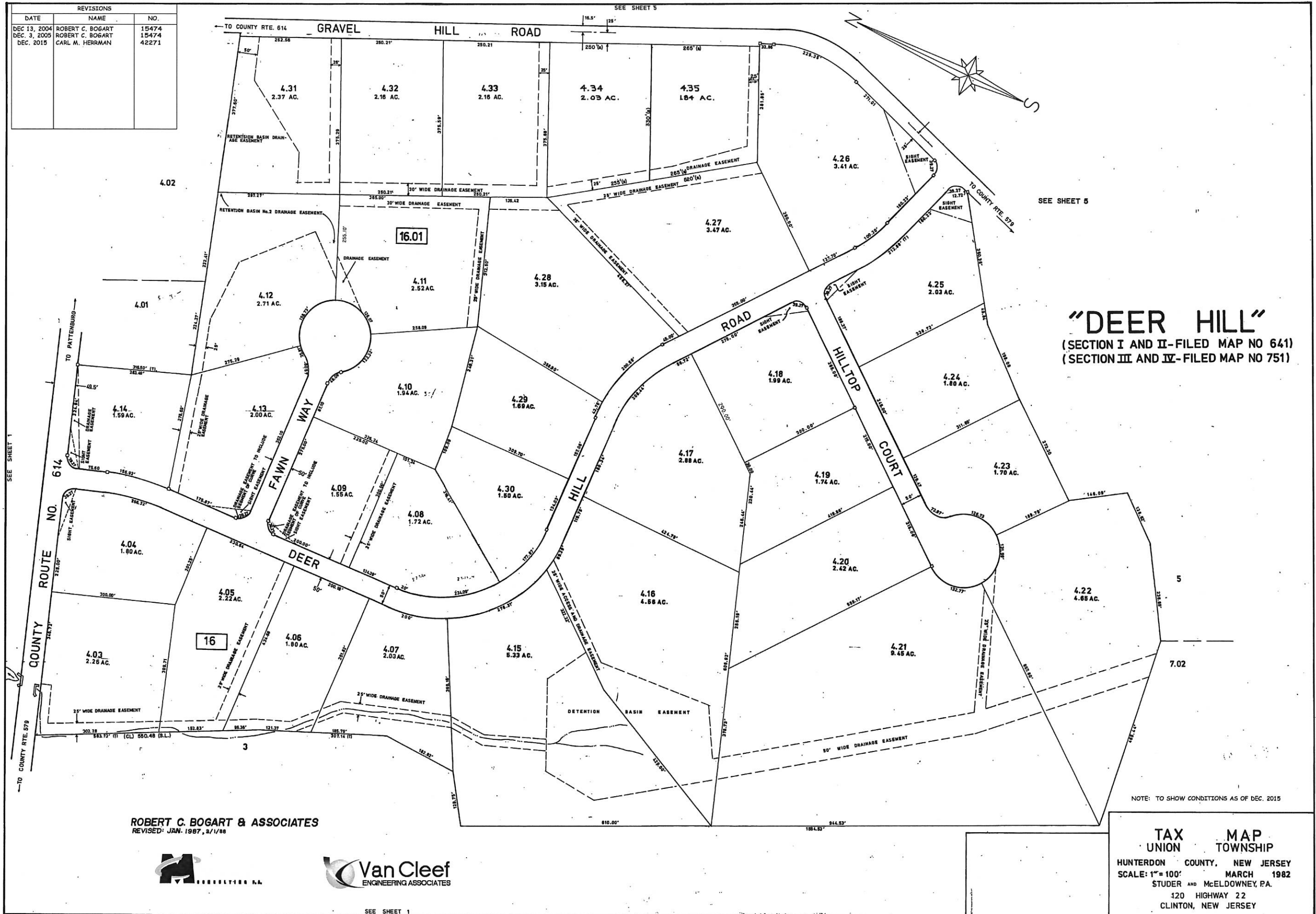


REVISIONS		
DATE	NAME	NO.
DEC 13, 2004	ROBERT C. BOGART	15474
DEC 3, 2005	ROBERT C. BOGART	15474
DEC. 2015	CARL M. HERRMAN	42271



"DEER HILL"
 (SECTION I AND II-FILED MAP NO 641)
 (SECTION III AND IV-FILED MAP NO 751)

ROBERT C. BOGART & ASSOCIATES
 REVISED: JAN. 1987, 2/1/88



NOTE: TO SHOW CONDITIONS AS OF DEC. 2015

TAX MAP
 UNION TOWNSHIP
 HUNTERDON COUNTY, NEW JERSEY
 SCALE: 1" = 100'
 STUDER AND McELDOWNY, P.A.
 120 HIGHWAY 22
 CLINTON, NEW JERSEY