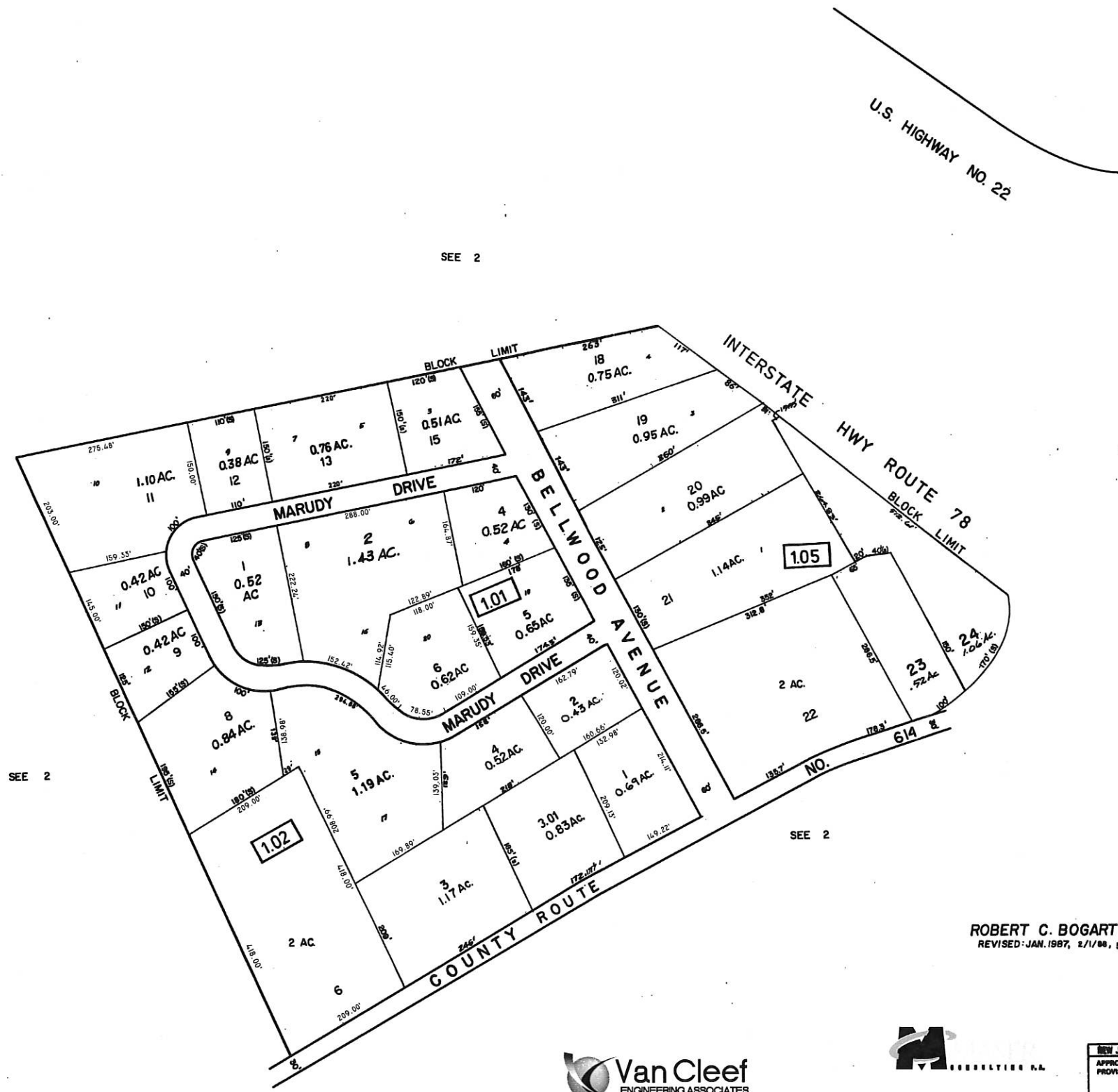


REVISIONS		
DATE	NAME	NO.
DEC 13, 2004	ROBERT C. BOGART	15474
DEC. 3, 2005	ROBERT C. BOGART	15474
DEC. 2015	CARL M. HERRMAN	42271

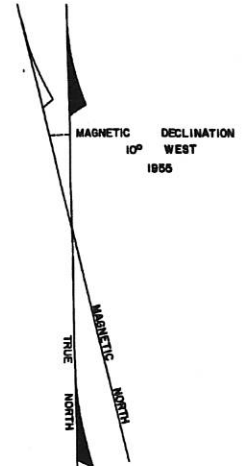


SEE 2

SEE 2

SEE 2

SEE 2



ROBERT C. BOGART & ASSOCIATES  
REVISED: JAN. 1987, 2/1/88, 5/1/85,



NOTE: TO SHOW CONDITIONS AS OF DEC. 2015



NEW JERSEY DEPARTMENT OF THE TREASURY  
APPROVED AS A TAX MAP PURSUANT TO THE PROVISIONS OF CHAPTER 175 LAWS OF 1913  
BY *C. L. Bogart*  
DATE DEC. 11 1958 STATE SUPERVISOR SERIAL NO. 216

**TAX MAP**  
UNION TOWNSHIP  
HUNTERDON COUNTY, NEW JERSEY  
SCALE 1"=100' OCTOBER 1958  
KEYSTONE MAPPING CO. INC.  
1454 MT. ROSE AVE.  
YORK, PENNSYLVANIA

REVISED JULY 1 '62, 9/1/63, 5/1/64, 4/1/65, 4/1/66, 10/1/67, 10/1/68, 12/31/77, 10/1/80, 4/1/81