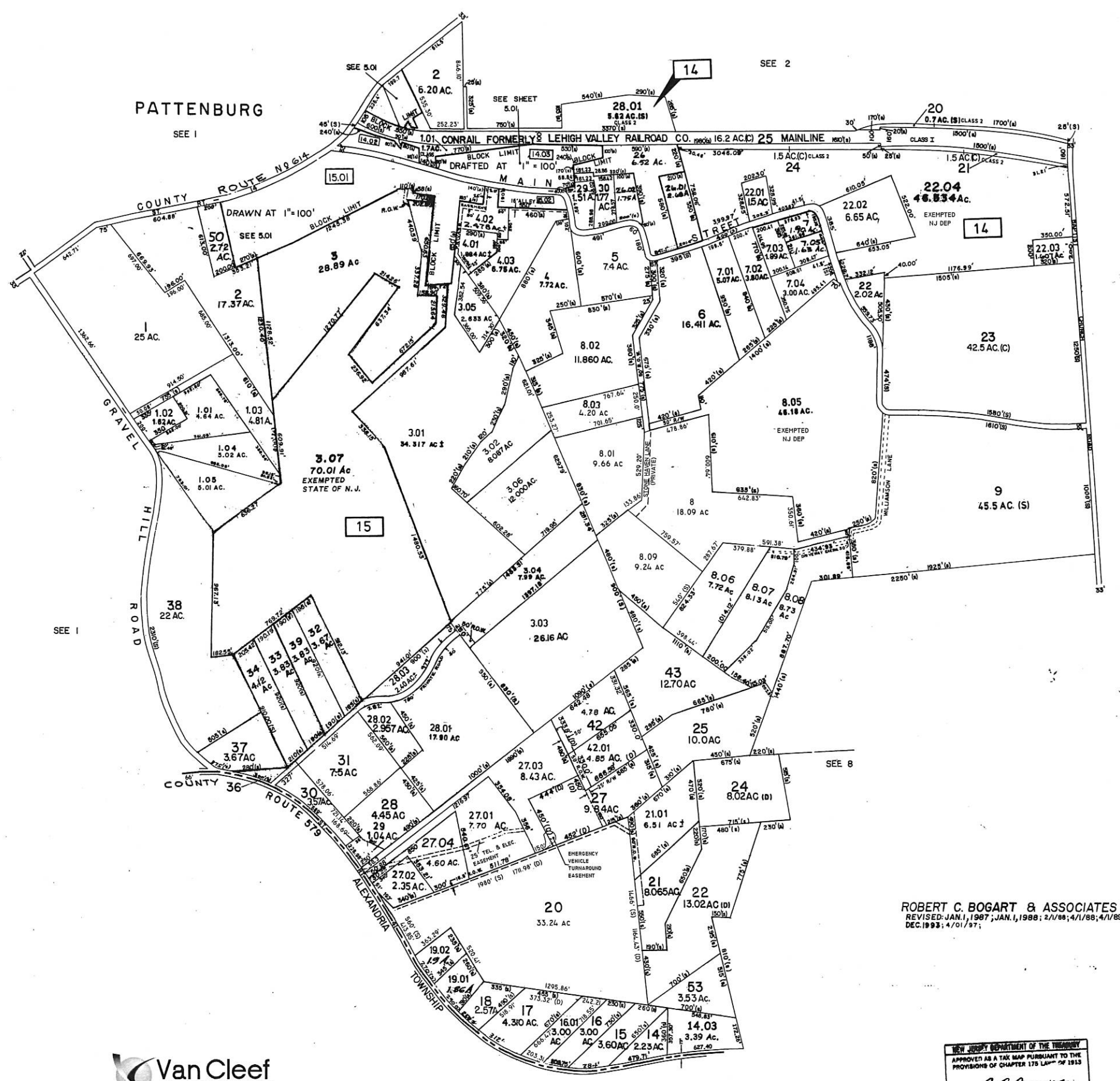


REVISIONS		
DATE	NAME	NO.
APRIL 7, 1999	ROBERT C. BOGART	15474
OCT 24, 2001	ROBERT C. BOGART	15474
MAY 10, 2002	ROBERT C. BOGART	15474
DEC 9, 2002	ROBERT C. BOGART	15474
JUNE 17, 2003	ROBERT C. BOGART	15474
MAR 4, 2004	ROBERT C. BOGART	15474
DEC 13, 2004	ROBERT C. BOGART	15474
AUG 25, 2005	ROBERT C. BOGART	15474
DEC. 2015	CARL M. HERRMAN	42271

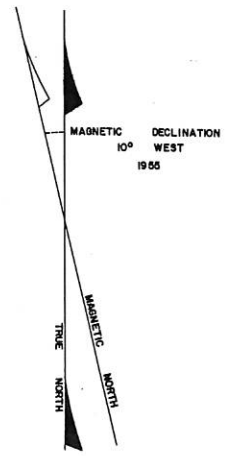


SEE 6

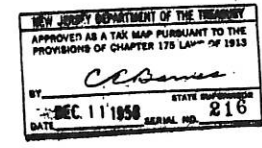
SEE 1

SEE 8

ROBERT C. BOGART & ASSOCIATES  
 REVISED: JAN. 1, 1987; JAN. 1, 1988; 2/1/88; 4/1/88; 4/1/89  
 DEC. 1993; 4/01/97;



**TAX MAP**  
 UNION TOWNSHIP  
 HUNTERDON COUNTY, NEW JERSEY  
 SCALE 1"=400' NOVEMBER 1958  
 KEYSTONE MAPPING CO. INC.  
 1454 MT. ROSE AVE.  
 YORK, PENNSYLVANIA



NOTE: TO SHOW CONDITIONS AS OF DEC. 2015

REVISED JULY 1, 1952; 8/5/52; 7/23/54; 4/14/55; 11/14/56; 12/31/77; 10/1/80; 10/24/81