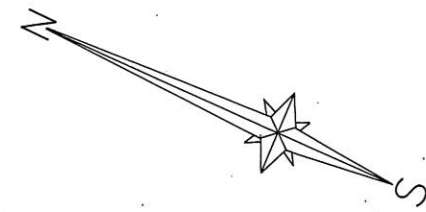
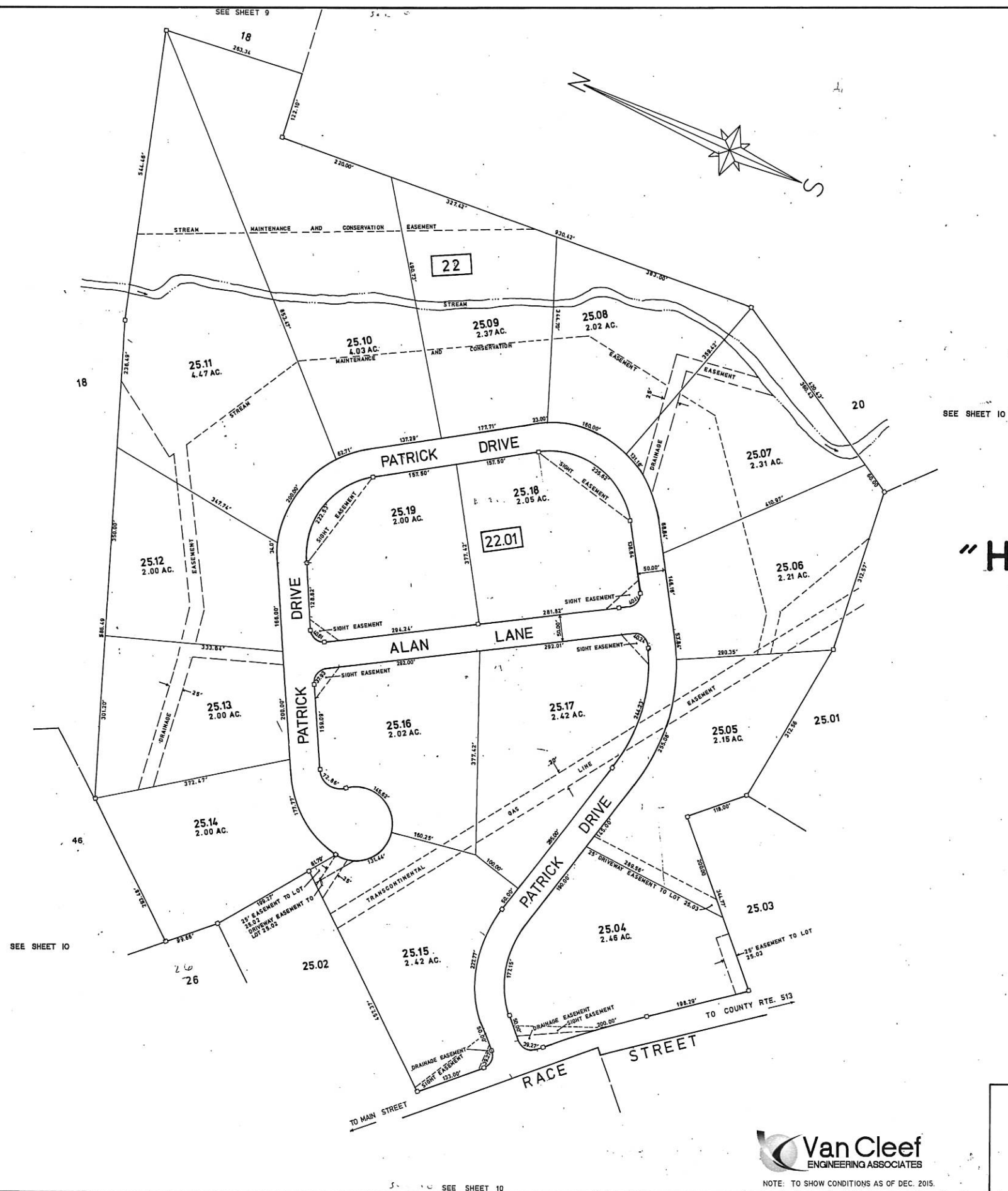


REVISIONS		
DATE	NAME	NO.
DEC 13, 2004	ROBERT C. BOGART	15474
DEC. 3, 2005	ROBERT C. BOGART	15474
DEC. 2015	CARL M. HERRMAN	42271



"HICKORY BROOK"
(FILED MAP NO. 636)

ROBERT C. BOGART & ASSOCIATES
REVISED: 12/1/88



NOTE: TO SHOW CONDITIONS AS OF DEC. 2015.

TAX MAP
UNION TOWNSHIP
HUNTERDON COUNTY, NEW JERSEY
SCALE: 1" = 100' APRIL 1982
STUDER AND McELDOWNY, P.A.
120 HIGHWAY 22
CLINTON, NEW JERSEY