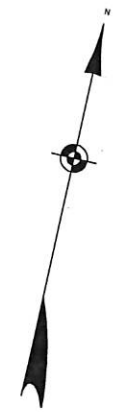
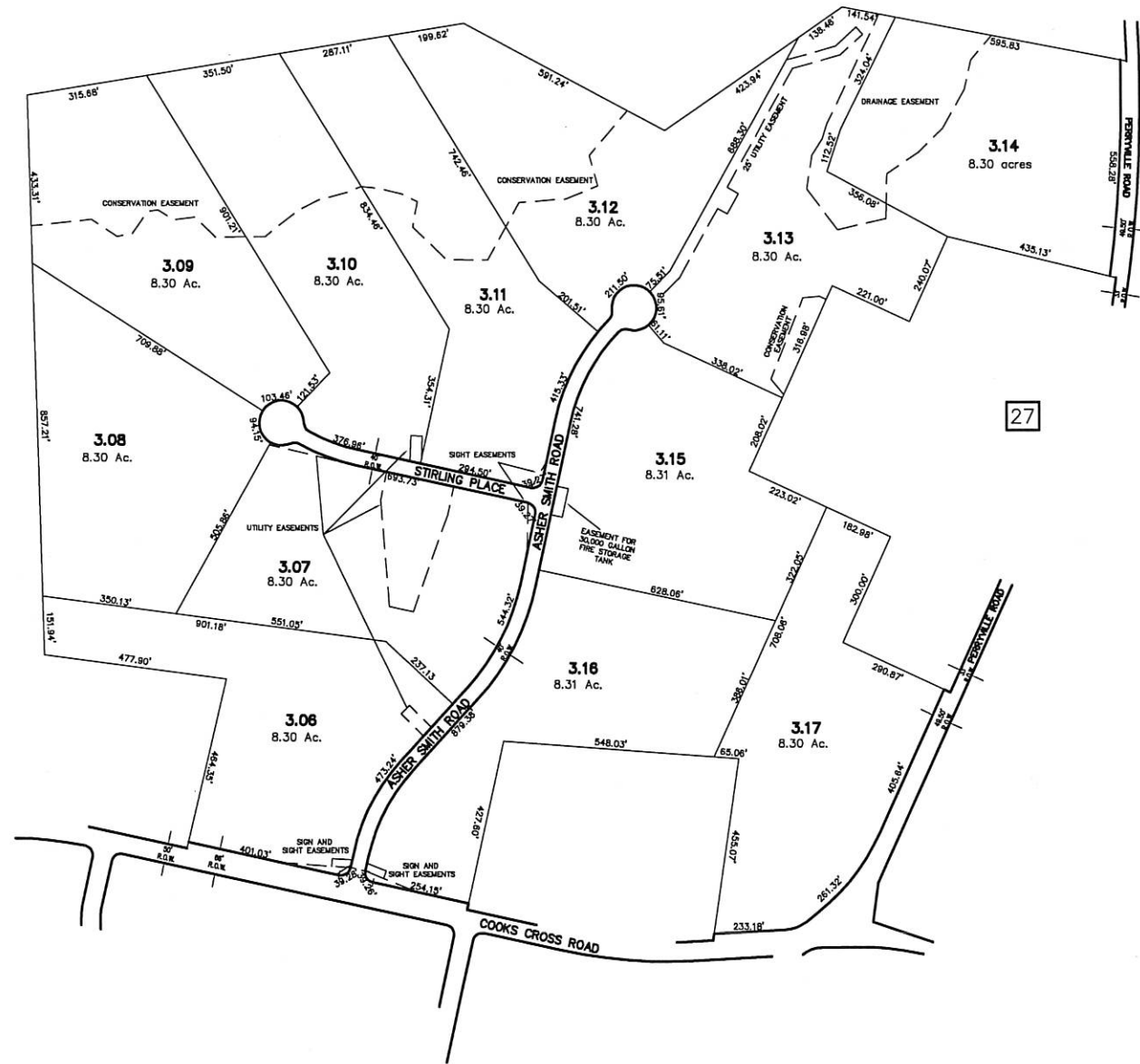


REVISIONS		
DATE	NAME	No.
DEC. 2015	CARL M. HERRMAN	42271

SEE SHEET 10



SEE SHEET 10

SEE SHEET 10

SEE SHEET 11



NOTE: TO SHOW CONDITIONS AS OF DEC. 2015.

TAX MAP
TOWNSHIP OF UNION
 HUNTERDON COUNTY, NEW JERSEY
 SCALE: 1" = 200' MAY 2003
ROBERT C. BOGART P.E., P.L.S.
 1325 ROUTE 31
 ANNANDALE, NEW JERSEY 08801